

**Chapter – 8****How do Organism Reproduce****Prepared by : Mr Manish Mavi****Question 1.**

Newly formed DNA copies may not be identical at times. Give one reason. (AI2017)

Answer:

When a cell reproduces, DNA replication occurs which results in formation of two similar copies of DNA. The process of copying the DNA leads to some variations each time. As a result, the DNA copies produced are similar to each other but sometimes may not be identical.

Question 2.

When a cell reproduces, what happens to its DNA? (AI 2017)

Answer:

When a cell reproduces, DNA replication occurs which forms two similar copies of DNA.

Question 3.

What is DNA? (Delhi 2016, Foreign 2015)

Answer:

DNA (deoxyribonucleic acid) is a polymer made up of large number of nucleotide units. It carries genetic information from generation to generation.

Question 4.

Name the life process of an organism that helps in the growth of its population. (AI 2015)

Answer:

Reproduction is a life process that helps in multiplication of an organism and growth of its population.

Question 5.

Reproduction is one of the most important characteristics of living beings. Give three reasons in support of the statement. (AI 2017)

Answer:

Reproduction is one of the most important characteristics of living beings because :

- it is essential for existence and continuity of a species.
- it helps to pass genetic information to next generation.
- it brings variations in next generation which is the basis for evolution.

Question 6.

Define reproduction. How does it help in

providing stability to the population of species? (AI 2016)

Answer:

The production of new organisms by the existing organisms of the same species is known as reproduction. It is linked to the stability of population of a species. DNA replication during reproduction ensures transfer of specific characters or body design features that is essential for an individual of a population to live and use that particular niche. Some variations present in a few individuals of population caused due to reproduction which also helps in their survival at changing niches.

Question 7.

What is DNA copying? State its importance. (Delhi 2015)

Answer:

DNA copying is the production of similar copies of DNA present in a cell using various chemical reactions. DNA copying is essential for reproduction through which the organisms pass on their body features to their offspring. Moreover, minor alternations during the process of DNA copying result in the production of variations. Such variations are useful for the survival of species over time.

Question 8.

What is the effect of DNA copying, which is not perfectly accurate, on the reproduction process? How does the amount of DNA remain constant through each new generation is a combination of DNA copies of two individuals? (AI 2014)

Answer:

In the process of reproduction, if DNA copying is not perfectly accurate, variation occurs. These in turn may allow few individuals of a population to survive in an altered niche and become the basis of evolution and over time. Such variations are useful for the survival of species.

The combination of DNA copies of two individuals, (male and female) occurs during sexual reproduction. Reduction division (meiosis) during gamete formation halves the chromosome number in both male and female gametes. Since these two gametes fuse during fertilisation, the original number of chromosomes (as in the parent) is restored in the offspring. By this way the amount of DNA remains constant in each new generation.

**Question 9.**

Name the method by which Spirogyra reproduces under favourable conditions. Is this method sexual or asexual? (Delhi 2017)

Answer:

The method by which Spirogyra reproduces under favourable conditions is fragmentation. This is an asexual mode of reproduction.

Question 10.

How does Plasmodium reproduce. Is this method sexual or asexual? (Delhi 2017)

Answer:

Plasmodium reproduces through multiple fission method. In this method, the parent organism splits to form many new organisms at the same time. This is an asexual method of reproduction.

Question 11.

Name the part of Bryophyllum where the buds are produced for vegetative propagation. (Delhi 2016)

Answer:

Bryophyllum propagates vegetatively by the buds produced at the margins of leaves.

Question 12.

What happens when a Planaria gets cut into two pieces? (Delhi 2016)

Answer:

When Planaria is cut into two pieces then each piece grows into a complete organism. This is known as regeneration.

Question 13.

What happens when a mature Spirogyra filament attains considerable length? (AI 2016)

Answer:

When a mature Spirogyra filament attains considerable length it simply breaks into two or more fragments and each fragment then grows into a new Spirogyra.

Question 14.

Name the method by which Hydra reproduces. Is this method sexual or asexual? (Foreign 2016)

Answer:

Hydra generally reproduces through budding. It is an asexual method of reproduction.

Question 15.

Name two simple organisms having the ability of

regeneration. (AI 2015)

Answer:

Hydra and Planaria are two organisms that have the ability to regenerate.

Question 16.

Name the causative agent of the disease “kala-azar” and its mode of asexual reproduction. (Foreign 2015)

Answer:

Causative agent of the disease Kala-azar is Leishmania. It reproduces asexually by binary fission.

Question 17.

Write two differences between binary fission and multiple fission in a tabular form. (Delhi 2015)

Answer:

Differences between binary fission and multiple fission are as follows:

Binary fission	Multiple fission
(i) The parent organism, splits to form two new organisms, e.g., Amoeba, Paramecium.	The parent organism splits to form many new organisms at the same time, e.g., Plasmodium.
(ii) The nucleus of the parent body divides only once to produce two nuclei.	The nucleus of the parent body divides repeatedly to produce many nuclei.

Question 18.

List four modes of asexual reproduction other than fission in the living organisms. (Delhi 2014)

Answer:

The four modes of asexual reproduction other than fission in living organisms are :

- budding
- spore formation
- regeneration and
- fragmentation.

Question 19.

List four advantages of vegetative propagation. (Delhi 2014)

Answer:

The following are the advantages of vegetative propagation:

- The characters of the parent plants are preserved hence a good variety produced can be propagated by vegetative means.



- The plants, which do not produce viable seeds or produce very few seeds, can be reproduced by this method. For example, banana, potato, grapes, sugarcane, rose, orange, etc.
- It is an easier, quicker and cheaper method of propagation.
- It is easier to get rid of pathogen from any part of plant by vegetative propagation.

Question 20.

List four modes of asexual reproduction. (Delhi 2014)

Answer:

The four modes of asexual reproduction are :

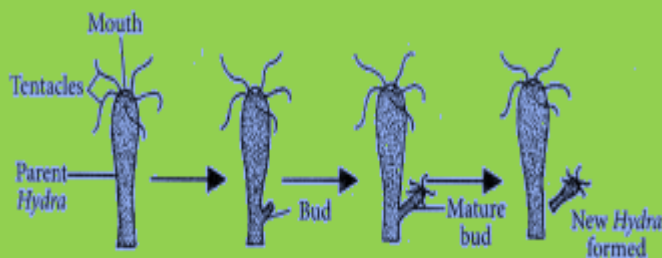
- binary fission
- budding
- regeneration and
- vegetative propagation.

Question 21.

Draw labelled diagrams to illustrate budding in Hydra. (AI 2014)

Answer:

The given diagram illustrates budding in Hydra:



Question 22.

How do Plasmodium and Leishmania reproduce? Write one difference in their mode of reproduction. (Foreign 2014)

Answer:

Plasmodium and Leishmania reproduce by the process of fission which is an asexual mode of reproduction. Plasmodium reproduces by multiple fission. About 1000 daughter cells are produced by the multiple fission of a Plasmodium. Leishmania reproduces by the process of binary fission. In Leishmania, the splitting of parent cell takes place in a definite plane (longitudinally) with respect to flagellum at its end to produce two daughter cells.

Question 23.

Define multiple fission. Give its one example.

(Foreign 2014)

Answer:

Multiple fission is an asexual mode of reproduction in which the parent organism splits to form many new organisms at the same time. Multiple fission occurs in Plasmodium.

Question 24.

List two advantages of vegetative reproduction practised in case of an orange plant. (Delhi 2012)

Answer:

The two advantages of vegetative propagation practised in case of an orange plant are :
The new plants produced by vegetative propagation will be exactly like the parent plant. Therefore, any desirable features of the parent plant will be replicated in the new plants. The orange plants that have lost the capacity to produce seeds, can also be propagated.

Question 25.

Name an organism which reproduces by spore formation. List three conditions favourable for spores to germinate and grow. (AI 2012)

Answer:

Rhizopus reproduce by the method of spore formation.
The three conditions favourable for spores to germinate and grow are moisture, suitable temperature and food (nutrition).

Question 26.

List two advantages of practising vegetative propagation in plants. Select two plants raised by this method from the list given below : Banana, Gram, Pea, Rose, Tomato, Wheat (Foreign 2012)

Answer:

Two advantages of the vegetative propagation of plants are:
Any desirable features of the parent plant can be replicated in the new plants.
Flowers and fruits can be grown in a shorter time as compared to the plants grown from seeds. The two plants raised by this method are banana and rose.

Question 27.

Write any two differences between binary fission and multiple fission in a tabular form as observed in cells of organisms. (Delhi 2011)

**Answer:**

Refer to answer 17.

Question 28.

List any four reasons for vegetative propagation being practised in the growth of some type of plants. (AI2011)

Answer:

Refer to answer 19.

Question 29.

What is vegetative propagation? Write two of its advantages. (Foreign 2011)

Answer:

Vegetative propagation is a method of asexual reproduction in plants in which the parts other than seeds are used as propagules. Also refer to answer 26.

Question 30.

Write one main difference between asexual and sexual mode of reproduction. Which species is likely to have comparatively better chances of survival – the one reproducing asexually or the one reproducing sexually? Give reason to justify your answer. (2018)

Answer:

Difference between asexual and sexual mode of reproduction is as follows :

Asexual reproduction:

Gametes are not formed hence fertilisation does not take place.

Sexual reproduction:

Gametes are always formed and fertilisation takes place to form a zygote.

Species reproducing sexually has a better chance of survival as variations occur only during the sexual reproduction. Variations increase the chances of survival of an individual by making them more fit. Selection of variations by environmental factors forms the basis of evolution.

Question 31.

What happens when

- (a) accidentally, Planaria gets cut into many pieces-
 - (b) Bryophyllum leaf falls on the wet soil
 - (c) on maturation sporangia of Rhizopus bursts?
- (Delhi 2017)

Answer:

- (a) When Planaria accidentally gets cut into many

pieces then its each piece grows into a complete organism. This is known as regeneration.

(b) When the Bryophyllum leaf falls on the wet soil, the buds present in the notches along the leaf margin develop into new plants. This is known as vegetative propagation.

(c) The sporangia of Rhizopus contain cells or spores that can eventually develop into new Rhizopus individuals when it bursts on maturation.

Question 32.

Describe reproduction by spores in Rhizopus. (AI 2017)

Answer:

Fungus Rhizopus reproduces by spore formation. During the growth of Rhizopus, small rounded, bulb-like structures develop at the top of the erect hyphae. Such structures are called sporangia. Inside each sporangium, nucleus divides several times. Each nucleus gets surrounded by a little amount of cytoplasm to become spore. Large number of spores are formed inside each sporangium. After sometime sporangium bursts and spores are released in the air. When these spores land on food or soil, under favourable conditions, they germinate into new individuals.

Question 33.

What is vegetative propagation? State two advantages and two disadvantages of this method. (AI 2017)

Answer:

Vegetative propagation is a type of asexual reproduction in which the plant parts other than seeds are used as a propagule.

Advantages of vegetative propagation :

- Desirable character of the plant can be preserved through generation.
- Seedless plants can be grown through this method.

Disadvantages of vegetative propagation :

- Plants produced by this method possess less vigour and are more prone to diseases.
- Plants produced by this method show no genetic variation.

Question 34.

What is multiple fission? How does it occur in an organism? Explain briefly. Name one organism



which exhibits this type of reproduction. (Delhi 2016)

Answer:

Multiple fission refers to the process of asexual reproduction in which many individuals are formed from a single parent. This method of reproduction occurs in unfavourable conditions. The unicellular organism develops a protective covering called cyst, over the cell. The nucleus of the cell divides repeatedly producing many nuclei. Later on, each nucleus is surrounded by small amount of cytoplasm and many daughter cells are produced within the cyst.

When conditions are favourable the cyst breaks and small offspring are liberated. This type of reproduction is seen in some protozoans, e.g., malarial parasite (Plasmodium).

Question 35.

Explain the term “regeneration” as used in relation to reproduction of organisms. Describe briefly how regeneration is carried out in multicellular organisms like Hydra. (AI 2016)

Answer:

The process of formation of entire organism from the body parts of a fully differentiated organism is called regeneration. It occurs by process of growth and development.

Simple animal like Hydra shows regeneration.

When a small piece of Hydra breaks off it grows into complete new Hydra.

During regeneration, the cells of cut body part of the organism divide rapidly to make a mass of cells. The cells here move to their proper places within the mass where they have to form different types of tissues. In this way complete organism is regenerated.

Question 36.

In the context of reproduction of species state the main difference between fission and fragmentation. Also give one example of each. (AI 2016)

Answer:

The main differences between fission and fragmentation are as follows:

Fission	Fragmentation
(i) Occurs in unicellular organisms.	Occurs in multicellular organisms.
(ii) Body of organism divides by mitotic divisions into two or	Body of the organism splits into one or more fragments and each

more daughter cells. E.g., Leishmania.	fragment forms a complete organism. E.g., Spirogyra.
---	---

Question 37.

What happens when

- (a) Planaria gets cut into two pieces
- (b) a mature Spirogyra filament attains considerable length
- (c) on maturation sporangia burst? (Foreign 2016)

Answer:

(a) When Planaria is cut into two pieces then each piece grows into a complete organism. This is known as regeneration.

(b) When a mature Spirogyra filament attains a considerable length it breaks into small pieces called fragments. These fragments grow into new individuals and this mode of reproduction is called fragmentation.

(c) When a sporangium burst, large number of spores are released in the air. When these spores land on food or soil, under favourable conditions they germinate into new individuals.

Question 38.

What is vegetative propagation? List with brief explanation three advantages of practising this process for growing some types of plants. Select two plants from the following which are grown by this process : Banana, Wheat, Mustard, Jasmine, Gram (Foreign 2016)

Answer:

Vegetative propagation is an asexual method of reproduction in plants. In this method, new plants are obtained from the parts of old plants (like stems, roots and leaves), without the help of any reproductive organs.

Advantages of vegetative propagation are as follows:

- Vegetative propagation is usually used for the propagation of those plants which produce either very few seeds or do not produce viable seeds.
- Seedless plants can be obtained by artificial vegetative propagation.
- Grafting is a propagation method which is very useful for fruit trees and flowering bushes. It enables to combine the most desirable characteristics of two plants.
- Plants like rose, sugarcane, cactus, etc., can be rapidly propagated through stem



cuttings as this method produces new plants from just one plant quickly without waiting for flowers and seeds. Banana and jasmine are generally grown through vegetative propagation method.

Question 39.

Explain budding in Hydra with the help of labelled diagrams only. (Delhi 2015)

Answer:

Refer to answer 21.

Question 40.

(a) Name the following:

(i) Thread like non-reproductive structures present in Rhizopus.

(ii) 'Blobs' that develop at the tips of the non-reproductive threads in Rhizopus.

(b) Explain how these structures protect themselves and what is the function of the structures released from the 'blobs' in Rhizopus.

(Delhi 2015)

Answer:

(a) (i) Threadlike non-reproductive structures present in Rhizopus are called hyphae.

(ii) 'Blobs' developing at the tip of hyphae are called sporangia which contain spores.

(b) 'The structures called spores (released from 'blobs') are present in sporangia which can develop into new Rhizopus individuals. These spores are covered with thick walls that protect them until they come in contact with another moist surface and can begin to grow.

Question 41.

Explain any three advantages of vegetative propagation. (Foreign 2015)

Answer:

Refer to answer 19.

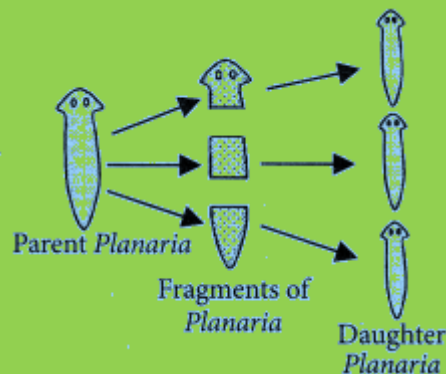
Question 42.

Explain the process of regeneration in Planaria. How is this process different from reproduction? (Foreign 2015, AI 2014)

Answer:

Planaria possesses great power of regeneration. If the body of Planaria somehow gets cut into a number of pieces, then each body piece can regenerate into a complete Planaria by growing all the missing parts. This is shown in following

figure:



During the process of reproduction, new organism is formed from the complete parent organism.

However, during fragmentation, a fragment of original parent body grows into new individual.

Question 43.

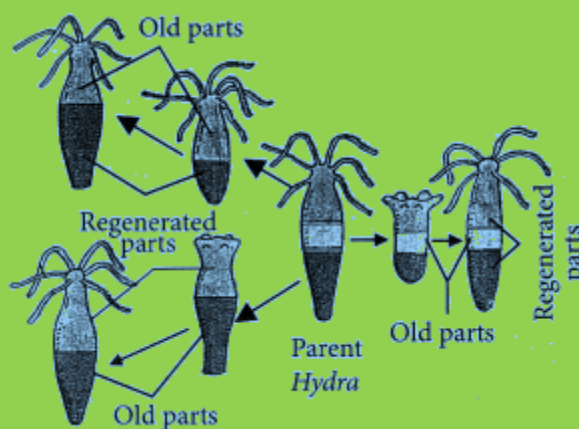
On cutting the body of an organism into many pieces, it was observed that many of these pieces developed as new individuals. Name the process and list two organisms in which this process may be observed. Draw a schematic diagram to illustrate the changes that are likely to be observed during the development of new individuals in any one of the organisms named. (Delhi 2014)

Answer:

On cutting the body of an organism into many pieces, each of these pieces develop as new individuals. This process is known as regeneration.

Hydra and Planaria are the organism in which this process may be observed.

Following is the diagram showing development of new individuals by regeneration of body parts of a parent Hydra:

**Question 44.**

Draw diagrams to explain the regeneration that takes place in each of the body parts of Planaria when its body is cut into three pieces. Name any other organism in which a similar process can be



observed. (Delhi 2014)

Answer:

Refer to answer 42.

Hydra is the organism in which regeneration is observed.

Question 45.

List any two modes of asexual reproduction in animals. Under which mode of reproduction is vegetative propagation placed and why? List two advantages of vegetative propagation. (AI 2014)

Answer:

The two modes of asexual reproduction in animals are : (i) fission and (ii) fragmentation. Vegetative propagation is placed under asexual mode of reproduction because in this mode new plants are obtained from the parts of old plants (like stems, roots and leaves), without the help of any reproductive organs. Also refer to answer 38.

Question 46.

What is vegetative propagation? List its two advantages. Select two plants raised by this method from the list given below:

Wheat, Tomato, Rose, Pea, Gram, Corn, Banana (Foreign 2014)

Answer:

Refer to answers 38 and 26.

Question 47.

(a) Name the mode of reproduction of the following organisms and state the important feature of each mode :

- (i) Planaria
- (ii) Hydra
- (iii) Rhizopus

(b) We can develop new plants from the leaves of Bryophyllum. Comment.

(c) List two advantages of vegetative propagation over other modes of reproduction. (2020)

Answer:

(a) (i) Planaria – Regeneration

Regeneration of organism from its cut body parts occurs by the process of growth and development. Regeneration is an asexual mode of reproduction common in lower plants and animals.

(ii) Hydra – Budding

In budding, a small part of the body of the parent organism grows out as a bud which on detaching forms a new organism.

Budding occurs in yeast, some protozoans and certain lower animals.

(iii) Rhizopus – Spores

Spores are usually produced in sporangia.

Spore formation is a common method of an asexual reproduction in bacteria and most of the fungi.

(b) The leaves of a Bryophyllum have special type of buds in their margins. These buds may get detached from the leaves, fall to ground and then grow to produce new Bryophyllum plants. The buds can also drop to the ground together with the leaf and then grow to produce new plants.

(c) Advantages of vegetative propagation are :

- It is a quick method of propagation.
- The new plants produced by artificial vegetative propagation are exactly like the parent plants.
- Many plants can be grown from one plant by vegetative propagation.

Question 48.

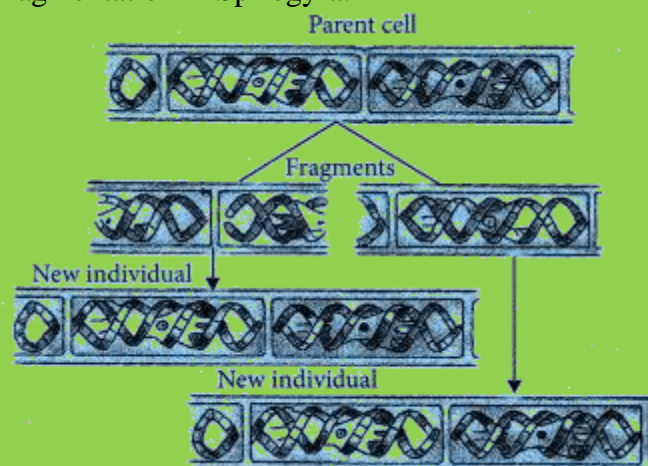
(a) What is fragmentation in organisms? Name a multicellular organism which reproduces by this method.

(b) What is regeneration in organism? Describe regeneration in Planaria with the help of a suitable diagram. (Delhi 2011)

Answer:

(a) Fragmentation is the mode of reproduction in which parent body breaks into two or more fragments and each fragment develops into a new individual. It is a method of reproduction in many filamentous algae, mycelial fungi and thalroid bryophytes, e.g., Spirogyra.

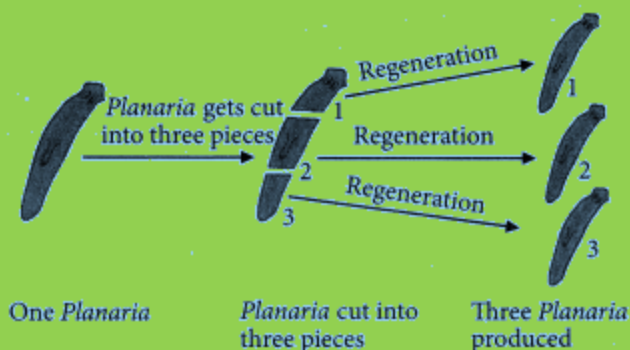
The given figure shows the process of fragmentation in Spirogyra:



(b) Regeneration may be defined as the ability of an organism to regenerate lost part of the body



which have been removed as by injury or autotomy. Many fully differentiated organisms use this ability as a mode of reproduction and give rise to new individual organisms from their body parts. It is common in Hydra, Planaria, etc. The process of regeneration in Planaria is described in the figure given below:



Question 49.

With the help of suitable diagrams, explain the various steps of budding in Hydra. (AI 2011)

Answer:

In multicellular organisms, such as Hydra, a small protuberance arises from one side of the body. The protuberance grows and develops adult like structure. In Hydra, it develops a hypostome and tentacles at its free end. It develops a basal disc at the point of attachment with the parent organism and finally gets detached to lead an independent life. Also refer to answer 21.

Question 50.

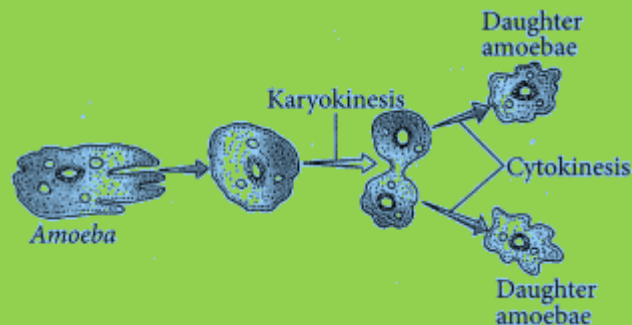
What is binary fission in organisms? With the help of suitable diagrams, describe the mode of reproduction in Amoeba. (AI2011)

Answer:

Binary fission is the division of adult parental body into two nearly equal daughter cells. It is the simplest and most common method of asexual reproduction found in protistan protozoans, i.e., Amoeba, Paramecium, etc. Amoeba reproduces by binary fission by dividing its body into two parts. When the Amoeba cell has reached its maximum size of growth, then first the nucleus of Amoeba lengthens and divides into two parts. After that the cytoplasm of Amoeba divides to form two smaller Amoeba (called daughter amoebae).

Diagrammatic representation of binary fission in

Amoeba is as follows:



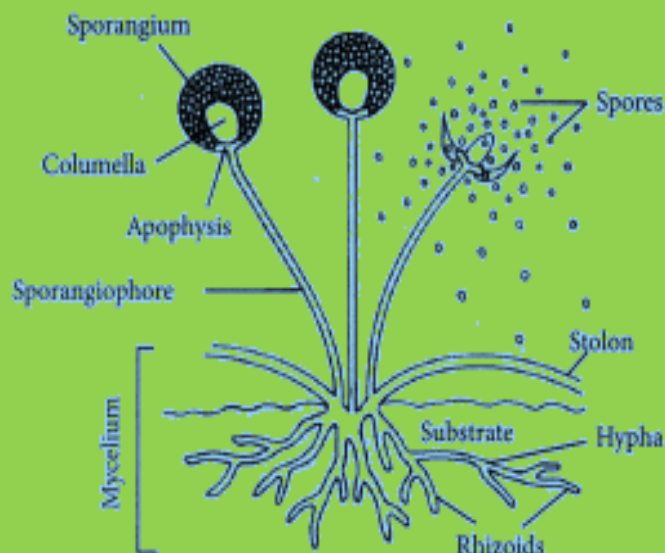
Question 51.

- (a) What is spore formation?
- (b) Draw a diagram showing spore formation in Rhizopus.
- (c) List two advantages for organisms to reproduce themselves through spores. (Foreign 2011)

Answer:

(a) Spore formation is the process of formation of microscopic reproductive structures called spores. These spores when detaches from the parent gives rise to a new individual. Reproduction by the formation of spores is a common method of asexual reproduction in some bacteria and most of the fungi.

(b) Following figure shows the process of spore formation in Rhizopus:



(c) Two advantages to spore producing organism are as follows:

Spores help organism to survive harsh environmental conditions as spores are covered by thick walls which protect them until they come in contact with moist surface and germinate. Spores are generally very small and light. Therefore, it ensures easy dispersal by wind, water and animal.

**Question 52.**

Fertilisation is the process of

- (a) transfer of male gamete to female gamete
- (b) fusion of nuclei of male and female gamete
- (c) adhesion of male and female reproductive organs
- (d) the formation of gametes by a reproductive organ. (2020)

The growing size of the human population is a cause of concern for all people. The rate of birth and death in a given population will determine its size. Reproduction is the process by which organisms increase their population. The process of sexual maturation for reproduction is gradual and takes place while general body growth is still going on. Some degree of sexual maturation does not necessarily mean that the mind or body is ready for sexual acts or for having and bringing up children. Various contraceptive devices are being used by human beings to control the size of population.

Answer:

- (b) fusion of nuclei of male and female gamete

Question 53.

List two common signs of sexual maturation in boys and girls.

Answer:

- (a) Two common signs of sexual maturation in boys and girls are :
 - Growth of pubic hair and extra hair in the armpits.
 - Development of oily skin and pimples.

Question 54.

What is the result of reckless female feticide?

Answer:

Female feticide is reducing the number of girls drastically in our country, which is also declining male-female sex ratio.

Question 55.

Which contraceptive method changes the hormonal balance of the body?

Answer:

Chemical contraceptive method changes the hormonal balance of the body.

Question 56.

Write two factors that determine the size of a population. (2020)

Answer:

The rate of birth and death in a given population will determine the size of a population.

Question 57.

What are all organisms called which bear both the sex organs in the same individual? Give one example of such organism. (AI 2016)

Answer:

Organisms which bear both male and female sex organs in the same individual are called bisexual. For example, Hibiscus.

Question 58.

List two functions of ovary of human female reproductive system. (AI 2016)

Answer:

- Two functions of ovary of human female are:
- production of female gametes, i.e., ova
 - secretion of female hormones, i.e., estrogen and progesterone.

Question 59.

List two unisexual flowers. (Foreign 2016)

Answer:

Flowers of papaya and cucumber are unisexual.

Question 60.

Why is fertilisation not possible without pollination? (Foreign 2016)

Answer:

The process of pollination (in plants) ensures that male gametes bearing structure called pollen comes in contact with the female reproductive structure of the plant. Once the male and female gametes are in close vicinity, they fuse and fertilisation is accomplished. Hence, fertilisation cannot take place without pollination.

Question 61.

Name the parts of a bisexual flower that are not directly involved in reproduction. (Foreign 2015)

Answer:

Calyx and corolla are parts of a flower that are not directly involved in reproduction.

Question 62.

No two individuals are absolutely alike in a population. Why? (Delhi 2014)

Answer:

No two individuals are absolutely alike in a population because sexual reproduction promotes



diversity of characters in the offspring by providing genetic variation.

Question 63.

Identify and write the male reproductive parts from the list of different parts of a flower given below:

Stigma, Sepal, Anther, Petal, Ovule, Filament (Delhi 2013C)

Answer:

The male reproductive parts that are present in a flower are:

(i) anther and (ii) filament.

Question 64.

What is the main difference between sperms and eggs of humans? Write the importance of this difference. (AI 2014)

Answer:

The main difference between sperms and eggs of humans is that a sperm has X or Y chromosome whereas egg has X chromosome. This helps in determination of the sex of a person and maintaining the genetic continuity in the organisms.

Question 65.

“The chromosomal number of the sexually producing parents and their offspring is the same”. Justify this statement. (AI 2014)

Answer:

In sexual reproduction, two gametes, male and female, combines together to form a new cell ‘zygote’. The reproductive cells or gametes contain only half the amount of DNA as compared to the non-reproductive cells of an organism. So, when a male gamete combines with a female gamete during sexual reproduction, then the new cell ‘zygote’ will have the normal amount of DNA. For example, the human sperm has 23 chromosomes and the human egg has also 23 chromosomes. So when a sperm and an egg fuse together during fertilisation, then the zygote formed will have $23 + 23 = 46$ chromosomes, which is the normal number of chromosomes in humans.

Question 66.

List two preparations shown every month by the uterus in anticipation of pregnancy in humans.

(Foreign 2014)

Answer:

The two preparations shown every month by the uterus in anticipation of pregnancy in human are:

(i) the wall of uterus becomes thick to receive the fertilised egg and

(ii) the uterine wall is richly supplied with blood to nourish the growing embryo.

Question 67.

State one genetically different feature between sperms and eggs of humans. What is its consequence? (Delhi 2012)

Answer:

A sperm may have X or Y chromosomes whereas egg have X chromosomes. The consequence of this is that sperm decides the sex of the child because eggs contribute only X chromosome while sperms contribute either X or Y chromosomes to the offspring. Therefore, if a child inherits X chromosome from her father, will be a girl and the one that inherit Y chromosome will be a boy.

Question 68.

State the role of placenta in the development of embryo. (AI 2012)

Answer:

Placenta is a physiological connection between an embryo and uterine wall of the mother through which nutrients and other useful substances enter into fetus from mother’s blood and waste products like urea and carbon dioxide are expelled into mother’s blood from fetus.

Question 69.

List the parts of human male reproductive system which contribute fluid to the semen. State two advantages semen offers to the sperms. (Foreign 2012)

Answer:

The secretion of male accessory reproductive glands, i.e., seminal vesicles, prostate gland and Cowper’s glands contribute fluid to the semen.

The two advantages that semen offers to the sperms are:

(i) it provides nutrition to the sperms and

(ii) it also activates the sperms and make their transport easier into the vagina of female during sexual act.

Question 70.

Explain giving one example of each, the unisexual and the bisexual flowers. (Delhi 2011)



Answer:

(i) Unisexual flowers : These flowers contain either stamens (male reproductive part) or carpel (female reproductive part). Example: Papaya, watermelon.

(ii) Bisexual flowers : The flower is said to be bisexual when both male and females parts, i.e., stamens and carpels, are present on the same flower. Example: Hibiscus, mustard.

Question 71.

Describe the role of fallopian tubes in the female reproductive system. (AI2011)

Answer:

Fallopian tubes are a pair of elongated, ciliated, muscular and tubular structures extending from close to ovaries to uterus. It is the site of fertilisation and helps in the conduction of ovum or zygote towards uterus by ciliary action and peristalsis.

Question 72.

Explain the terms:

- (i) Implantation of zygote
- (ii) Placenta (Foreign 2011)

Answer:

- (i) Implantation of zygote refers to the process of attachment of the blastocyst on the inner wall of the uterus, It occurs on 7th day after fertilisation and is controlled by estrogen and progesterone hormones.
- (ii) Refer to answer 68.

Question 73.

Define the term pollination. Differentiate between self-pollination and cross-pollination. What is the significance of pollination? (2020)

Answer:

The process of transfer of pollen grains from anther of a flower to the stigma of the same flower or another flower of the same species is known as pollination. The two inodes of pollination are self pollination and cross pollination.

Differences between self pollination and cross pollination are as follows:

Character	Self pollination	Cross pollination
Occurrence	Occurs within a flower or between two flowers of the same plant.	Occurs between two flowers of two different

		plants of the same species.
Agent of pollination	Usually no external agent of pollination is required.	External agents such as wind, water, insects and birds are required.
Production of pollen grains	Produced in small numbers, thus no wastage of pollen grains occurs.	Produced in large numbers thus, wastage of pollen grains occurs.
Appearance of flowers	Flowers are generally not attractive.	Flowers are attractive with coloured petals.
Fragrance and nectar	Commonly flowers do not produce scent or nectar.	Flowers generally produces scent and nectar.
Nature of offspring produced	Offspring produced have genetic makeup identical to the parent plant, no variation occurs.	Offspring produced may differ in genetic make-up and variations occur.

Pollination is important because it brings pollen grains to the female reproductive part (carpel) of the plant that leads to fertilisation.

Question 74.

(a) What provides nutrition to human sperms?

State the genetic constitution of a sperm.

(b) Mention the chromosome pair present in a zygote which determines the sex of (i) a female child and (ii) a male child. (2020)

Answer:

(a) The secretions of seminal vesicles and prostate gland provides nutrition to the human sperms and also make their further transport easier. The genetic constitution of a sperm can be 50% have X chromosome and 50% have Y chromosome.

(b) (i) XX – Female child

(ii) XY – Male child

**Question 75.**

State the basic requirement for sexual reproduction. Write the importance of such reproductions in nature. (Delhi 2017)

Answer:

The basic requirement for sexual reproduction is involvement of both sexes, i.e., male and female, to produce an offspring. It takes place by the combination of gametes which come from two different parents.

The importance of sexual reproduction in nature are :

- (i) Fusion of male and female gametes coming from two different and sexually distinct individuals, exhibit diversity of characters in offspring.
- (ii) Meiosis during gametogenesis provides opportunities for new combination of genes, which leads to variation required for evolution and plays a prominent role in the origin of new species. Variations lead to the appearance of such characters, which fit to the changing environment, resulting in the survival of the species.

Question 76.

State the changes that take place in the uterus when:

- (a) Implantation of embryo has occurred.
- (b) Female gamete/egg is not fertilised. (Delhi 2017)

Answer:

- (a) Implantation is the close attachment of the blastocyst (young multicellular embryo) to the uterine wall. It is followed by a number of developmental changes in the thickened wall of uterus. An intimate connection between the fetal membrane and the uterine wall called placenta is formed. This is a disc which is embedded in the uterine wall. The placenta serves as the nutritive, respiratory and excretory organ of the fetus.
- (b) When the female gamete/egg is not fertilised, this lining is not needed any longer. So, the lining slowly breaks and comes out through vagina as blood and mucus. This cycle takes place every month and is known as menstrual cycle.

Question 77.

List any two steps involved in sexual reproduction and write its two advantage. (Delhi 2017)

Answer:

The two main steps involved in sexual reproduction are:

- Formation of male and female gametes.
- Fusion of a male gamete with a female gamete to form a new cell called zygote by the process of fertilisation.

The two important advantages of sexual reproduction are:

- It promotes diversity of characters in the offspring through genetic variations.
- It plays an important role in continuous evolution of better organisms that may lead to the origin of new species.

Question 78.

List three techniques that have been developed to prevent pregnancy. Which one of these techniques is not meant for males? How does the use of these techniques have a direct impact on the health and prosperity of a family? (AI 2017)

Answer:

Methods developed to prevent pregnancy are:

- barrier method, i.e., use of condoms, diaphragm, etc.
- chemical method, i.e., use of oral pills or vaginal pills.
- surgical method, i.e., vasectomy and tubectomy. Out of these methods, chemical method is not meant for males.

Use of these techniques help to keep control over number of children in a family, which directly effects prosperity of a family. One of the most common reason for deterioration of women's health is frequent conception and child bearing. Controlled childbirth will directly affect women health and this will indirectly affect the prosperity of family and nation.

Question 79.

How do organisms, whether reproduced asexually or sexually maintain a constant chromosome number through several generations? Explain with the help of suitable example. (Delhi 2016)

Answer:

In organisms reproducing asexually, only single parent is involved in reproduction. Therefore, amount of DNA remains same from parent to offspring. For example in Amoeba, whole organism divides into two daughter individuals by binary fission. Therefore, amount of DNA remain constant.



In organisms reproducing sexually, reproduction takes place with the help of formation of haploid gametes. Gametes are special type of cells called reproductive cells which contain only half the amount of DNA as compared to the normal body cells of an organism. So, when a male gamete combines with a female gamete during sexual reproduction, then the new cell 'zygote' will have the normal amount of DNA. For example, the human sperm has 23 chromosomes and the human egg (or ovum) has also 23 chromosomes. So, when a sperm and an egg fuse together during fertilisation, then the zygote formed will have $23 + 23 = 46$ chromosomes, which is the normal number of chromosomes.

Question 80.

Name the parts A, B and C shown in the following diagram and state one function of each. (Delhi 2016)

**Answer:**

In the given figure, part A is anther, part B is style and part C is ovule.

Anther (A) is a part of male reproductive organ of flower called stamen. Large number of pollen grains are formed inside anther. Style (B) and ovule (C) are parts of female reproductive organ of flower called carpel / pistil.

Style is a long conducting tube which gives the passage to pollen tube carrying male gametes so that it reaches ovary which contains one or more ovules. Ovules contain female gamete or egg. On fertilisation ovary converts into fruit and ovules give rise to seeds.

Question 81.

Suggest three contraceptive methods to control the size of human population which is essential for the health and prosperity of a country. State the basic principle involved in each. (Delhi 2016)

Answer:

Three contraceptive methods which can help to control human population are:

(i) Condom : It is a mechanical barrier which does

not allow sperms and ovum to meet, hence prevents fertilisation. Condoms are made of thin rubber/latex sheath used to cover the penis in the male and vagina/cervix in female just before coitus (intercourse) so that the ejaculated semen is not released in the female reproductive tract.

(ii) Intrauterine devices (IUDs): These are devices inserted by doctors or expert nurses in the uterus through vagina. These are presently available as non-medicated IUDs, copper releasing IUDs (CuT, etc.) and hormone releasing IUDs. They increase phagocytosis of sperms within uterus and suppress sperm motility and its fertilising capacity. They also make uterus unsuitable for implantation and cervix hostile to sperms.

(iii) Oral pills : These pills contain progesterone alone or a combination of progestogen and estrogen. They inhibit ovulation and make uterus unsuitable for implantation, hence prevent fertilisation.

Question 82.

What are the functions of testes in the human male reproductive system? Why are these located outside the abdominal cavity? Who is responsible for bringing about changes in appearance seen in boys at the time of puberty? (Delhi 2016)

Answer:

Testes, in human males, are the primary reproductive organs. They are the site of sperm formation. The testes also produce male sex hormone testosterone. Testes are located outside the abdominal cavity because sperm formation requires a lower temperature than normal body temperature. The temperature of the testes in the scrotum is about $2-2.5^{\circ}\text{C}$ lower than normal body temperature. This temperature is ideal for sperm formation and development. Hormone testosterone brings about the development of secondary sexual characters during puberty in boys like growth of facial hair, deepening of voice, growth of scrotum and penis, accumulation of muscle mass, etc., and also regulates formation of sperms.

Question 83.

What is meant by pollination? Name and differentiate between the two modes of pollination in flowering plants. (Delhi 2016)

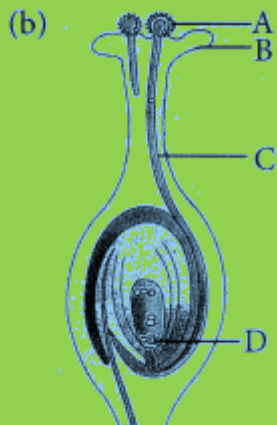
Answer:

Refer to answer 73.



Question 84.

(a) List two reasons for the appearance of variations among the progeny formed by sexual reproduction.



- (i) Name the part marked A in the diagram.
- (ii) How does A reaches part B?
- (iii) State the importance of the part C.
- (iv) What happens to the part marked D after fertilisation is over? (AI 2016)

Answer:

(a) Variations arise in sexually reproducing organisms on account of the following:

- (i) Genetic variations occur because DNA copying mechanism is not absolutely accurate.
- (ii) Creation of new combinations of genetic variations because variations from two individuals combine during fusion of gametes.

- (b) (i) A is pollen grain.
- (ii) Part B is stigma. It is the part of pistil (female reproductive organ) that receives pollen grains. Pollen grains reach stigma through various agencies like wind, water, insect, etc.
- (iii) Pollen tube (C) carries male gametes to the ovule present in ovary. Male gametes fuse with egg and secondary nucleus to give rise to zygote and endosperm.
- (iv) Female gamete (D) fuses with male gamete and converts to embryo after fertilisation.

Question 85.

What is pollination? List its two types and write a distinguishing feature between the two. (Foreign 2016)

Answer:

Refer to answer 73.

Question 86.

What is sexual reproduction? List its four significances. (Foreign 2016)

Answer:

Sexual reproduction is the process of production of offspring by the fusion of male and female gametes. Here, haploid gametes fuse to form diploid zygote which develop into a mature organism.

Significance of sexual reproduction are as follows:

- Sexual reproduction gives rise to genetic variations because of genetic recombination that takes place during fusion of gametes.
- Progenies arising through sexual reproduction sometimes show better combination of traits and get better adapted to their surroundings.
- Genetic recombination, interaction, etc., during sexual reproduction provide vigour and vitality to the offspring.
- Variations in genes play an important role in evolution.

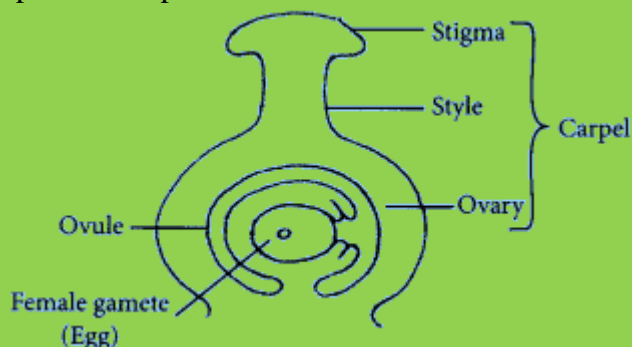
Question 87.

Name the reproductive parts of an angiosperm. Where are these parts located? Explain in brief the structure of its female reproductive parts. (Foreign 2016)

Answer:

The reproductive parts of an angiosperm are stamen (male reproductive part) and carpel/pistil (female reproductive part). These are located in the flowers of an angiospermic plant.

The given diagram shows the structure of female reproductive part of a flower:



A Carpel is made of three parts: stigma, style and ovary. The top part of carpel is called stigma. Stigma is for receiving the pollen grains during pollination. Stigma is sticky so that pollen can stick to it. The middle part of carpel is called style. Style is a tube which connects stigma to the ovary. The swollen part at the bottom of a carpel is called



ovary. The ovary contains ovules. Ovules contain the female gametes or female sex cells (egg) of the plant. There are usually many ovules in the ovary. Each ovule contains only one female gamete of the plant.

Question 88.

(a) Mention the role of the following organs of human male reproductive system.

- (i) Testes (ii) Scrotum (iii) Vas deferens
(iv) Prostate gland

(b) What are the two roles of testosterone?
(Foreign 2016)

Answer:

(a) (i) Testes : The two testes in male are the sites where male gametes, i.e., sperms are formed. Testes also produce the male sex hormone called testosterone.

(ii) Scrotum : The scrotum is a pouch of skin that lie outside abdominal cavity. The two testes lie in respective scrotal sacs. The scrotum acts as a thermoregulator and provides an optimal temperature for the formation of sperms.

(iii) Vas deferens : This is a straight tube, about 40 cm long, which carries the sperms to the seminal vesicles, where mucus and a watery alkaline fluid containing fructose, mix with the sperms.

(iv) Prostate gland : It is a single large gland that surrounds the urethra and produces a milky, slightly acidic secretion. Secretion of prostate gland nourishes and activates the sperm to swim.

(b) Two roles of testosterone are:

- (i) It plays a key role in development of male secondary sex organs such as prostate, etc.
(ii) It promotes the secondary sexual characteristics in males such as increased muscle and bone mass, growth of body hair, etc.

Question 89.

List any four methods of contraception used by humans. How does their use have a direct effect on the health and prosperity of a family? (Delhi 2015, 2014)

Answer:

The four methods of birth control which deliberately prevent fertilisation in humans are:

- Barrier method- These are physical devices to prevent the entry of sperm in the female, e.g., condoms.
- Chemical method – It involves the use of oral pills that check ovulation. These are

mainly hormonal preparations and contain estrogen and progesterone.

- Intrauterine contraceptive device-These devices are implemented into uterus, e.g., copper – T, to prevent fertilisation.
- Surgical methods : These methods involves removal of a small portion of vas deferens in males or fallopian tube in females to prevent fertilisation. Contraception prevents frequent pregnancies and sexually transmitted diseases thus supports good health and prosperity of a family.

Question 90.

What are sexually transmitted diseases? List two examples each of diseases caused due to (i) bacterial infection and (ii) viral infection.

Which device or devices may be used to prevent the spread of such diseases? (Delhi 2015)

Answer:

The diseases that are spread by sexual contact with an infected person are called sexually transmitted disease (STDs).

- (i) Bacterial infection causes gonorrhoea, syphilis.
(ii) Viral infection causes AIDS, genital herpes.
STDs can be prevented by using male and female condoms.

Question 91.

List six specific characteristics of sexual reproduction. (AI 2015)

Answer:

Six specific characteristics of sexual reproduction are as follows:

- Two different sexes, i.e., male and female are involved in this process.
- Sexual reproduction involves formation of special sex cells called gametes.
- Fusion of gametes or fertilisation takes place in the body of female (internal fertilisation) or outside (external fertilisation).
- Offspring inherit traits from both parents (heredity) and also show some new traits of their own (variation), hence they are not clones of the parents.
- Variations in sexually reproducing organisms arises on account of crossing over during meiotic division during gamete formation.



- It plays a prominent role in origin of new species as it leads to variations which accumulate over a period of time and get carried to successive generations.

Question 92.

List four points of significance of reproductive health in a society. Name any two areas related to reproductive health which have improved over the past 50 years in our country. (AI 2015)

Answer:

The general awareness regarding reproductive health in a society is significant as :

- Maintenance of personal hygiene among youngsters and proper knowledge of their reproductive parts helps them adjust with the physical changes and cope with emotional disturbances.
- Reproductively healthy society must be free from the curse of child marriage which begets many complications at the level of individual and society both.
- Proper care of expecting mothers, monitoring their health after child birth and care of new born help in building a healthy society.
- Married couples aware of contraceptive methods lead a better married life as they are capable of avoiding unwanted pregnancies and have negligible chances of contracting sexually transmitted diseases.

In past 50 years, various areas related to reproductive health have been launched which have improved the reproductive health of our society in following ways: Two of them are :

- reduced mortality rate of mother and infant
- birth control due to easily available contraceptive and reduced STDs cases.

Question 93.

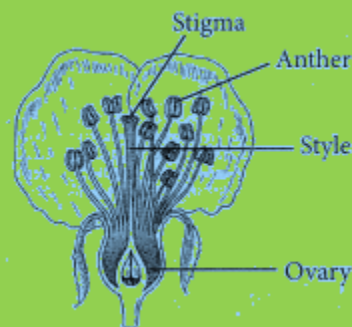
Draw longitudinal section of a bisexual flower and label the following parts on it.

- Anther
- Ovary
- Stigma
- Style (Foreign 2015)

Answer:

Longitudinal section of a bisexual flower is as

follows:

**Question 94.**

What is placenta? Explain its function in humans. (Foreign 2015, AI 2014)

Answer:

Placenta is an intimate connection between fetus and uterine wall of the mother to exchange the materials. It is a disc shaped structure embedded in the uterine wall. It contains villi on embryo's side and blood spaces towards mothers side.

Blood spaces surround villi.

Placenta performs the following functions:

- All nutritive elements from maternal blood pass into the fetus through it.
- Placental helps in respiration, i.e., supply of oxygen and removal of CO₂ from fetus to maternal blood.
- Fetal excretory products diffuse out into maternal blood through placenta and are excreted by mother.
- Placenta also secretes hormone.

Question 95.

Write one main difference between asexual and sexual mode of reproduction. Which species is likely to have comparatively better chances of survival – the one reproducing asexually or the one reproducing sexually? Justify your answer. (Foreign 2015, AI 2014)

Answer:

Difference between asexual and sexual mode of reproduction is as follows :

Asexual reproduction :

Gametes are not formed hence fertilisation does not take place.

Sexual reproduction :

Gametes are always formed and fertilisation takes place to form a zygote.

Species reproducing sexually have a better chance of survival as variation occurs only during the sexual reproduction. Variations are necessary for



evolution and to increase chances of survival in changed environmental conditions.

Question 96.

Why is DNA copying an essential part of the process of reproduction? What are the advantages of sexual reproduction over asexual reproduction? (Foreign 2015)

Answer:

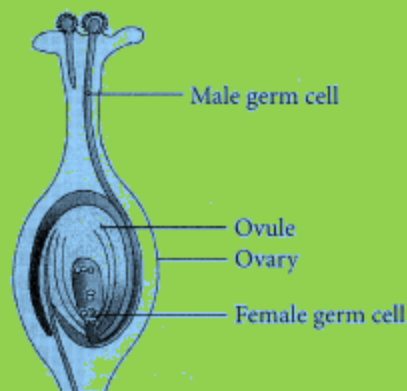
DNA copying is an essential part of the process of reproduction as it results in passing of nearly same genetic information from parents to the offsprings. DNA replication also ensures that same number of chromosomes are passed from parents to offspring. Advantages of sexual reproduction over asexual reproduction is that sexual reproduction provides variations which is a major factor for evolution that helps in survival of species in changing environment.

Question 97.

Draw a diagram of the longitudinal section of a flower exhibiting germination of pollen on stigma and label (i) ovary (ii) male germ cell, (iii) female germ cell and (iv) ovule on it. (Foreign 2015)

Answer:

The diagram of the longitudinal section of flower is as follows:



Question 98.

Write names of those parts of a flower which serve the same function as the following do in the animals

- (i) testes
- (ii) sperm
- (iii) ovary
- (iv) egg. (Delhi 2014)

Answer:

The parts of a flower which serve the same function as following do in the animals are

- (i) testes – anther of stamen
- (ii) sperm – pollen
- (iii) ovary – ovary of pistil
- (iv) egg – female germ cell present in ovule.

Question 99.

List four methods of contraception used by humans.

Justify the following statement.

“The use of contraceptive methods has a direct effect on the health and prosperity of a family.” (AI 2014)

Answer:

Refer to answer 89.

Question 100.

Describe in brief the function of the various parts of the female reproductive part of a bisexual flower. (Foreign 2014)

Answer:

Refer to answer 87.

Question 101.

On the notice board of ultrasound clinics it is generally stated. “Here prenatal sex determination and disclosure of sex (boy or girl before birth) of fetus is not done. It is prohibited and punishable under law.”

- (a) List two advantages of imposing ban on prenatal sex determination.
- (b) What can students do to educate the society about the following?
 - (i) The ill-effects of indiscriminate female feticide.
 - (ii) Adopting small family norms. (Foreign 2014)

Answer:

- (a) The two advantages of imposing ban on prenatal sex determination are
 - (i) check on female feticide
 - (ii) improving sex ratio in the country.
- (b) Students should educate the society as that

(i) female feticide is reducing the number of girls drastically in some societies. For a healthy society, the male-female sex ratio must be maintained at almost the same level. Due to reckless female feticide, the male-female child sex ratio is declining at an alarming rate in some sections of our society.

(ii) Children in a small family can be provided with all the resources from education, good amenities



like food, clothing and healthy life style. As the family grows larger, the resources should be shared with increased number of member. Having fewer children also keeps the mother in good health.

Question 102.

Name the two reproductive parts of a bisexual flower which contain the germ cells. State the location and function of its female reproductive part. (Foreign 2014)

Answer:

The two reproductive parts of a bisexual flower which contain the germ cells are carpel (female reproductive part) and stamen (male reproductive part). Carpel is situated in the centre of the flower as a flask-shaped structure. A carpel is made up of three parts-stigma, style and ovary. The distal part of a carpel is called stigma. Stigma is responsible for receiving pollen during pollination. Style is an elongated tubular structure which connects stigma with ovary. The basal swollen part of carpel is ovary. Ovary bears several ovules. After fertilisation ovules form seeds and ovary forms the fruit.

Question 103.

Write two examples each of sexually transmitted diseases causes by (i) virus, (ii) bacteria. Explain how the transmission of such diseases be prevented? (Delhi 2013)

Answer:

The infectious (communicable) diseases, which are spread from an infected person to a healthy person by sexual contact, are called sexually transmitted diseases.

Sexually transmitted diseases caused by virus are : AIDS (Acquired Immunodeficiency Syndrome) and genital warts while caused by bacteria are gonorrhoea and syphilis.

Preventive measures for these diseases are:

- educating people in high risk groups.
- mutually faithful monogamous relationship.
- avoiding prostitution, multipartner sex and homosexuality.
- using condoms, etc.

Question 104.

Explain the meaning of sexually transmitted diseases (STDs). Give two examples of STDs each, caused due to (i) bacterial infection and (ii)

viral infection. State in brief how the spread of such diseases may be prevented. (Delhi 2012)

Answer:

Refer to answer 103.

Question 105.

List and explain in brief three methods of contraception. (AI 2012)

Answer:

Refer to answer 81.

Question 106.

What is AIDS? Which microbe is responsible for AIDS infection? State one mode of transmission of this disease. Explain in brief one measure for prevention of AIDS. (Foreign 2012)

Answer:

AIDS (Acquired Immunodeficiency Syndrome), is an infectious viral disease which weakens the immune system of human body and generally leads to death. It is caused by a retrovirus called HIV (Human Immunodeficiency Virus). AIDS can be transmitted by having sexual contact with an infected person. Use of condoms which are physical barriers can reduce the risk of a sexual exposure to HIV.

Question 107.

(a) List two sexually transmitted diseases in each of the following cases:

- (i) Bacterial infections
 - (ii) Viral infections
- (b) How may the spread of such diseases be prevented? . (Delhi 2011)

Answer:

Refer to answer 103.

Question 108.

What does HIV stands for? Is AIDS an infectious disease? List any four modes of spreading AIDS. (AI 2011)

Answer:

HIV stands for Human Immunodeficiency Virus. Yes, AIDS is an infectious disease. It is transmitted sexually or through exposure to contaminated blood.

Four modes of spreading AIDS are :

- unprotected sex with an infected partner
- use of contaminated needle and syringes
- use of contaminated razors for shaving



- transfusion of infected blood or blood products.

Question 109.

Expand AIDS. List any four methods of prevention (control) of AIDS. (Foreign 2011)

Answer:

AIDS is expanded as Acquired Immuno-deficiency Syndrome.

Four methods of prevention or control of AIDS are :

- use of sterilised needles and syringes for injecting drugs or vaccine
- to avoid sex with multiple partners
- use of condoms during intercourse
- avoid use of contaminated razor in barber shop.

Question 110.

(a) List three different categories of contraceptive methods.

(b) Why has Government of India prohibited prenatal sex determination by law? State its benefits in the long run.

(c) Unsafe sexual act can lead to various infections. Name two bacterial and two viral infections caused due to unsafe sex. (2020)

Answer:

(a) Three different categories of contraceptive methods are :

- Barrier methods, i.e., use of condoms, etc.
- Chemical methods, i.e., use of oral pills or vaginal pills.
- Surgical methods, i.e., vasectomy and tubectomy.

(b) Prenatal sex determination was banned in India in 1994. This was done to prevent sex selective abortion. It is being used to kill the normal female fetus. This killing of the unborn girl child is called female feticide which is reducing the number of girls drastically in some societies of our country. Due to reckless female feticide, male-female sex ratio is declining at an alarming rate. Its benefit in the long run is that the female-male ratio could be maintained for a healthy society.

(c) Bacterial diseases due to unsafe sex are gonorrhoea, syphilis.

Viral diseases due to unsafe sex are AIDS, genital herpes.

Question 111.

(a) In the female reproductive system of human beings, state the functions of:

- Ovary
 - Oviduct.
- (b) Mention the changes which the uterus undergoes, when
- it has to receive a zygote.
 - no fertilisation takes place.
- (c) State the functions of placenta. (2020)

Answer:

(a) (i) Ovaries in female are primary sex organs (or female gonads) which perform the dual function – production of female gametes (eggs or ova) and secretion of female sex hormones (estrogen and progesterone).

(ii) Oviducts or fallopian tube are paired tubes originating near to the ovaries of their respective sides and extend upto uterus. The terminal part of fallopian tube is funnel-shaped with finger-like projections called fimbriae lying near ovary. Fimbriae pick up the ovum released from ovary and push it into fallopian tube. Fertilisation also takes place in the oviduct.

(b) (i) As the ovary releases one egg every month, the uterus also prepares itself, every month to receive fertilised egg by making its lining thick and spongy to nourish the zygote if fertilisation takes place.

(ii) When the female gamete/egg is not fertilised, this lining is not needed any longer. So, the lining slowly breaks and comes out through vagina as blood and mucus through menstrual cycle that takes place every month.

(c) Placenta performs the following functions :

- All nutritive elements from maternal blood pass into the fetus through it.
- Placenta helps in respiration i.e., supply of oxygen and removal of CO₂ from fetus to maternal blood.
- Fetal excretory products diffuse out into maternal blood through placenta and are excreted by mother.
- Placenta also secretes hormone.

Question 112.

(a) Draw a diagram showing germination of pollen on stigma of a flower and mark on it the following organs/parts:

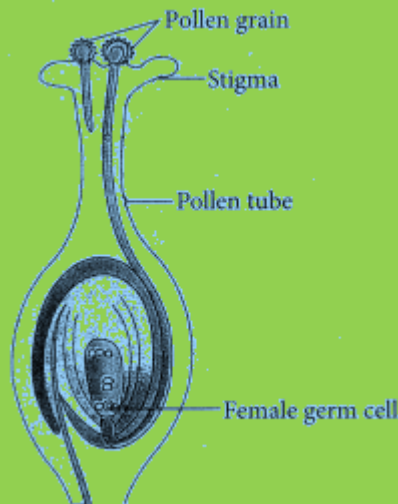
- Pollen grain
- Pollen tube



- (iii) Stigma
- (iv) Female germ cell
- (b) State the significance of pollen tube.
- (c) Name the parts of flower that develop after fertilisation into:
 - (i) Seed
 - (ii) Fruit. (2020)

Answer:

(a) Diagram showing germination of pollen on stigma of a flower is:



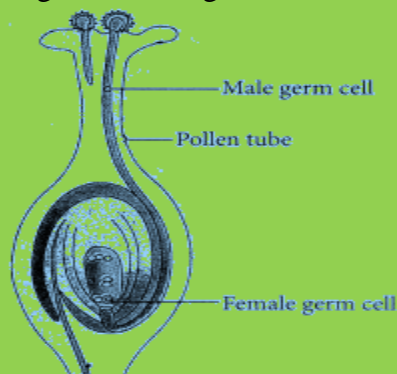
- (b) The pollen tube acts as a conduit to transport the male gamete cells from the pollen grain at stigma to the ovules at the base of the carpel for the process of fertilisation.
- (c) After fertilisation,
 - (i) ovule develops into seed and
 - (ii) ovary develops into fruit.

Question 113.

Draw a neat diagram showing fertilisation in a flower and label (a) pollen tube (b) Male germ cell and (c) Female germ cell on it. Explain the process of fertilisation in a flower. What happens to the (i) ovary and (ii) ovule after fertilisation? (2020)

Answer:

Diagram showing fertilisation in a flower:



Fertilisation, in plants, occurs when the male gamete present in pollen grain fuses with the female gamete (or egg) present in ovule. When a pollen grain falls on the stigma of the carpel, it bursts open and grows a pollen tube downwards through the style towards the female gamete in the ovary. Male gametes move down the pollen tube. The pollen tube enters the ovule in the ovary. The tip of pollen tube bursts and male gametes comes out of pollen tube. In ovary, the male gamete of pollen combines with the female gamete or egg present in ovule to form a fertilised egg.

After fertilisation,

- (i) ovule develops into seed
- (ii) ovary develops into fruit.

Question 114.

- (a) What is puberty?
- (b) Describe in brief the functions of the following parts in the human male reproductive system.
 - (i) Testes
 - (ii) Seminal vesicle
 - (iii) Vas deferens
 - (iv) Urethra
- (c) Why are testes located outside the abdominal cavity?
- (d) State how sperms move towards the female germ cell. (2020)

Answer:

(a) The age at which the sex hormones begin to be produced and the boy and girl becomes sexually mature, i.e., able to reproduce is called puberty.

(b) (i) Testes : The two testes in male are the sites where male gametes, i.e., sperms are formed. Testes also produce the male sex hormone called testosterone.

(ii) Seminal vesicles are one pair of sac-like structures near the base of bladder. Seminal fluid is a watery alkaline fluid that contains nutrients (fructose) which serve as a source of energy for the sperm. Each seminal vesicle releases its contents into the ejaculatory duct during ejaculation.

(iii) Vas deferens : This is a straight tube, about 40 cm long, which carries the sperms to the seminal vesicles, where mucus and a watery alkaline fluid containing fructose, mix with the sperms.

(iv) Urethra : It is a long tube that arises from urinary bladder. Urethra carries urine from the



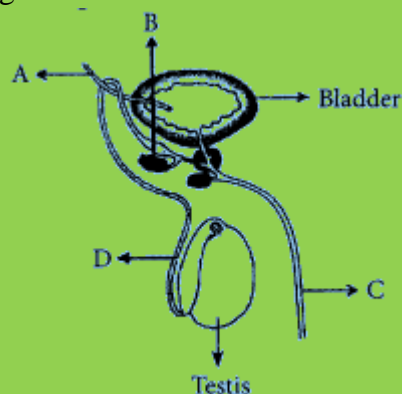
bladder as well as sperms from the vas deferens, through the penis.

(c) Testes are located outside the abdominal cavity because sperm formation requires a lower temperature than normal body temperature. The temperature of the testes in the scrotum is about 2-2.5°C lower than normal body temperature. This temperature is ideal for sperm formation and development.

(d) The sperms present in the testes of man are introduced into the vagina of the woman through penis during copulation. Millions of sperms are released into the vagina at one time. The sperms are highly active and mobile. They travel from here upward through the uterus at the top of fallopian tube within five minutes.

Question 115.

Based on the given diagram answer the **Questions** given below:



- (a) Label the parts A, B, C and D.
- (b) Name the hormone secreted by testis and mention its role.
- (c) State the functions of B and C in the process of reproduction. (2020)

Answer:

- (a) A – Ureter
B – Seminal vesicle
C – Urethra
D – Vas deferens
- (b) Testes produce male sex hormone testo-sterone. Hormone Testosterone brings about the development of secondary sexual characters during puberty in boys like growth of facial hair, deepening of voice, build up of muscle mass and also regulates formation of sperms.
- (c) Seminal vesicles (B) release its contents into the ejaculatory duct during ejaculation. Urethra (C) carries sperms from the vas deferens through the penis.

Question 116.

- (a) List two reasons of using contraceptive methods by married couples.
- (b) Write in proper sequence the processes going on in the different organs of the reproductive system of a human female starting from the time of egg production to childbirth. (2020)

Answer:

- (a) Two reasons of using contraceptive methods by married couples are :
 - (i) They prevent frequent or unwanted pregnancies.
 - (ii) They prevent the transfer of sexually transmitted diseases (STDs).
- (b) The female germ cells or eggs are made in ovaries. They are also responsible for the production of some hormones. When a girl is born, the ovaries already contain thousands of immature eggs on reaching puberty.

Some of these start maturing, one egg is produced every month by one of the ovaries. The egg is carried from the ovary to the womb through a thin oviduct or fallopian tube. The oviducts unite into an elastic bag-like structure known as uterus. The uterus opens into the vagina through the cervix. The sperms enter through vagina passage during sexual intercourse. They travel upwards and reach the oviduct where they may meet the egg. The fertilised egg, the zygote gets implanted in the lining of uterus and starts dividing. The mothers body is designed to undertake the development of the child. So, the uterus prepares itself every month to receive and nurture the growing embryo. The lining thickens and is richly supplied with blood to nourish the growing embryo.

After implantation, a disc-like special tissue develops between the uterus wall (called uterine wall) and the embryo (or fetus), which is called placenta. The fetus is connected to placenta in mothers body through umbilical cord. It is through the placenta that all the requirements of the developing fetus like nutrition, respiration and excretion, etc., are met from the mothers body. The development of the child inside the mothers body takes approximately nine months. The child is born as a result of rhythmic contractions of the muscles in the uterus.

Question 117.

- (a) Identify the modes of asexual reproduction in each of the following organisms:



- (i) Hydra
 - (ii) Planaria
 - (iii) Amoeba
 - (iv) Spirogyra
 - (v) Rhizopus
- (b) List three advantages of vegetative propagation.
- (c) Why cannot fertilisation take place in flowers if pollination does not occur? (2020)

Answer:

- (a) (i) Hydra – Budding
 - (ii) Planaria – Regeneration
 - (iii) Amoeba – Fission
 - (iv) Spirogyra – Fragmentation
 - (v) Rhizopus – Spores
- (b) Refer to answer 47(c).
- (c) Pollination brings male gametes in close proximity to the female reproductive part of flower. In the absence of pollination, there will be no male gametes available for fertilisation with female gametes.

Question 118.

Define pollination. Explain the different types of pollination. List two agents of pollination. How does suitable pollination lead to fertilisation? (Delhi 2019)

Answer:

The process of transfer of pollen grains from anther of a flower to the stigma of the same flower or another flower of the same species is known as pollination. Pollination may be of two major types- (i) self pollination and (ii) cross pollination.

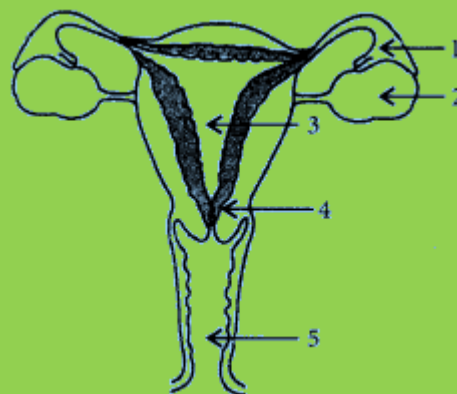
- (i) Self pollination is the transfer of pollen grains from the anther to the stigma of the same flower, or to the stigma of another flower of the same plant. This pollination generally takes place in bisexual flowers because they have both male and female gametes in them.
 - (ii) Cross pollination is the transfer of pollen grains from the anther of a flower of one plant to the stigma of a flower of another plant of the same species. This occurs in unisexual as well as bisexual flowers.
- Two agents of pollination are wind and water.

Pollination results in the deposition of related pollen grains over the receptive stigma of the carpel. Pollen grains after landing on stigma, absorb water, swell and then germinate to produce

pollen tubes. Many pollen tubes grow into the stigma, but only one passes through the style and then moves towards the ovary. Two non-motile male gametes are formed inside the tube during its growth through the style. After reaching the ovary, pollen tube enters the ovule through the micropyle. The tip of the tube finally pierces the micropylar end of the embryo sac. After penetration, the tip of pollen tube ruptures releasing two male gametes into the embryo sac. The mature embryo sac consists of an egg apparatus (one haploid egg and two synergids), two polar nuclei and three antipodal cells. During the act of fertilisation, one male gamete fuses with the egg to form the diploid zygote.

Question 119.

- (a) Identify the given diagram. Name the parts 1 to 5.



- (b) What is contraception? List three advantages of adopting contraceptive measures. (Delhi 2019)

Answer:

(a) The given diagram is the sectional view of human female reproductive system.

The labelled parts are:

- 1. Funnel of fallopian tube or oviduct
- 2. Ovary
- 3. Uterus or womb
- 4. Cervix
- 5. Vagina

(b) Contraception is the avoidance of pregnancy. There are several methods of contraception such as:

- Barrier methods (condoms, diaphragm, etc.)
- Chemical methods (spermicide creams and jellies)
- Intrauterine Contraceptive Devices (IUCDs) (Lippes loop, CuT, etc.)
- Natural methods (rhythm method, coitus interruptus)



- Surgical methods (vasectomy, tubectomy)

Three advantages of adopting contraceptive methods are:

- They prevent frequent or unwanted pregnancies.
- They prevent the transfer of sexually transmitted diseases (STDs).
- They help to regulate the population growth.

Question 120.

(a) Distinguish between cross-pollination and self-pollination. Mention the site and product of fertilisation in a flower.

(b) Draw labelled diagram of a pistil showing the following parts:

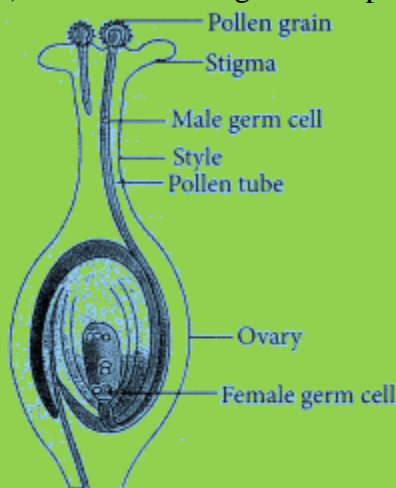
Stigma, Style, Ovary, Female germ cell (AI 2019)

Answer:

(a) Refer to answer 73.

Fertilisation takes place in the ovary of a female flower. Inside the ovary, the ovule is fertilised by pollen. After the process of fertilisation, the ovary in the flower thickens and enlarges to form the fruit, whereas the ovule becomes the seed containing the embryo.

(b) The labelled diagram of a pistil is as follows :



Question 121.

(a) Draw a diagram of human female reproductive system and label the parts:

- (i) which produce an egg
- (ii) where fertilisation takes place

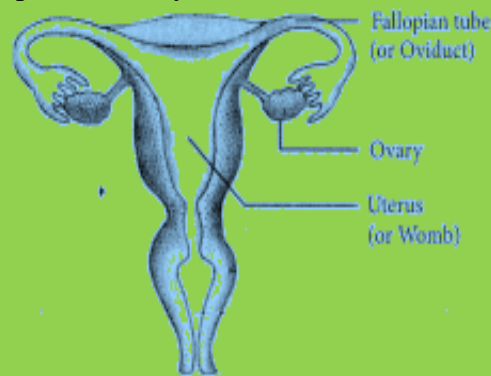
(b) List two bacterial diseases which are transmitted sexually.

(c) What are contraceptive devices? Give two reasons for adopting contraceptive devices in humans. (AI 2019)

Answer:

(a) The sectional view of human female

reproductive system is as follows:



(i) Ovary is the part where eggs develop.

(ii) Fallopian tube is the part where fertilisation takes place.

(b) Gonorrhoea and syphilis are two bacterial diseases which are transmitted sexually by bacterium *Neisseria gonorrhoeae* and *Treponema pallidum* respectively.

(c) Contraceptive devices are those devices which are used to prevent pregnancy. It includes diaphragm, condom and intrauterine devices.

Contraceptive methods are adopted:

- (i) to avoid unwanted birth.
- (ii) to keep the population of a country under control.

Question 122.

(a) Write the function of following parts in human female reproductive system:

(i) Ovary (ii) Oviduct (iii) Uterus.

(b) Describe in brief the structure and function of placenta. (2018)

Answer:

(a) Function of human female reproductive part are as follows :

(i) Ovary: The ovaries are primary sex organs (or female gonads), which perform the dual function : Production of female gametes (eggs or ova) Secretion of female sex hormones (estrogen and progesterone).

(ii) Oviduct (Fallopian tube): It is a site where egg and sperms meet and fertilisation takes place. It also conducts the ovum or zygote towards uterus by ciliary action and peristalsis.

(iii) Uterus : It is the seat of implantation, placentation and foetal development. It's muscular wall helps in expelling of baby during childbirth.

(b) Placenta is an intimate mechanical and physiological connection between fetus and uterine wall of the mother. It is a disc shaped structure embedded in the uterine wall. It contains chorion having villi on the embryo's side and blood spaces



towards mother's side. Blood spaces surround the villi. Placenta is connected to the fetus by umbilical cord.

Placenta performs the following functions :

- All nutritive elements from maternal blood passes into the fetus through it.
- Placenta helps in respiration, i.e., supply of O₂ to the fetus and removal of CO₂ from fetus to maternal blood.
- Fetal excretory products diffuse out into maternal blood through placenta and are excreted by mother.
- Placenta also secretes hormones.
- Placenta acts as a barrier between mother and fetus blood and only allows necessary materials to pass through it.

Question 123.

(a) Name the organ that produces sperms as well as secretes a hormone in human males. Name the hormone it secretes and write its functions.

(b) Name the part of the human female reproductive system where fertilisation occurs.

(c) Explain how the developing embryo gets nourishment inside the mother's body. (Delhi 2017)

Answer:

(a) Refer to answers 88 (a)(i) and (b).

(b) In human female the fertilisation occurs in the oviducts or Fallopian tube.

(c) The developing embryo gets nourishment from the mother's blood with the help of a special tissue called placenta. This is a disc like structure embedded in uterine wall. It contains villi that provides a large surface area to pass glucose and oxygen from mother to embryo. Placenta links the embryo to the mother through umbilical cord.

Question 124.

(a) Write the functions of each of the following parts in a human female reproductive system.

- (i) Ovary
- (ii) Uterus
- (iii) Fallopian tube

(b) Write the structure and functions of placenta in a human female. (AI 2017)

Answer:

(a) (i) Refer to answer 111(a)(i).

(ii) Uterus is a single, pear-shaped, highly muscular, hollow structure present in the pelvic cavity, lying between urinary bladder and rectum.

If fertilisation takes place, the embryo gets implanted to the wall of uterus and grows there until birth. Development of fetus occurs inside uterus, hence it is also called womb.

(iii) Refer to answer 111 (a)(ii).

(b) Refer to answer 122(b).

Question 125.

(a) Write the functions of the following parts in human female reproductive system :

- (i) Ovary
- (ii) Oviduct
- (iii) Uterus

(b) Describe the structure and function of placenta. (Delhi 2016)

Answer:

(a) Refer to answers 111(a)(i), (ii) and 124(a)(ii).

(b) Refer to answer 122(b).

Question 126.

What is placenta? Describe its structure. State its functions in case of a pregnant human female. (AI 2016)

Answer:

Refer to answer 122(b).

Question 127.

(a) State in brief the functions of the following organs in the human female reproductive system. Ovary, Fallopian tube, Uterus

(b) What is menstruation? Why does it occur? (Foreign 2016)

Answer:

(a) Refer to answers 111(a)(i), (ii) and 124(a) (ii).

(b) Menstruation is the cyclic discharge of blood along with endometrial lining of the uterus and unfertilised egg in women. It last for 3-5 days. After the release of egg in the females, the uterine lining becomes thickened for the implantation of fertilised egg or zygote. In the absence of fertilisation, the egg along with endometrial lining is expelled out of the body in the form of menstruation.

Question 128.

Write the functions of the following in human female reproductive system.

Ovary, oviduct, uterus

How does the embryo get nourishment inside the mothers body? Explain in brief. (Delhi 2015)

Answer:



Refer to answers 111(a) (i), (ii), 124(a)(ii) and 123 (c).

Question 129.

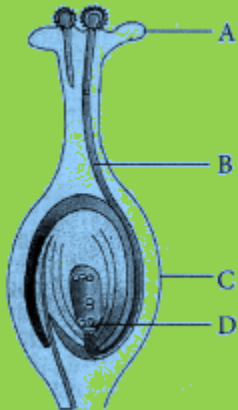
- (a) Name the human male reproductive organ that produce sperms and also secretes a hormone. Write the functions of the secreted hormone.
- (b) Name the parts of the human female reproductive system where, (i) fertilisation takes place (ii) implantation of the fertilised egg occurs. Explain how the embryo gets nourishment inside the mother's body. (AI 2015)

Answer:

- (a) Refer to answers 88(a)(i) and (b).
- (b) Refer to answers 122(a) and 123(c).

Question 130.

- (a) Identify A, B, C and D in the given diagram and write their names.



- (b) What is pollination? Explain its significance.
- (c) Explain the process of fertilisation in flowers. Name the parts of the flower that develop after fertilisation into
- (i) seed
- (ii) fruit. (Foreign 2015)

Answer:

- (a) In the given diagram A is stigma, B is pollen tube, C is ovary and D is female germ cell.
- (b) The process of transfer of pollen grains from the anther of a flower to the stigma of the same flower or another flower is known as pollination. Pollination is important because it brings pollen grains to the female reproductive part (carpel) of the plant that leads to fertilisation.
- (c) Fertilisation, in plants, occurs when the male gamete present in pollen grain fuses with the female gamete (or egg) present in ovule. When a pollen grain falls on the stigma of the carpel, it bursts open and grows a pollen tube downwards

through the style towards the female gamete in the ovary.

Male gametes move down the pollen tube. The pollen tube enters the ovule in the ovary. The tip of pollen tube bursts and male gametes comes out of pollen tube. In ovary, the male gamete of pollen combines with the female gamete or egg present in ovule to form a fertilised egg.

After fertilisation,

- (i) ovule develops into seed
- (ii) ovary develops into fruit.

Question 131.

- (a) Give one example each of unisexual and bisexual flower.
- (b) Mention the changes a flower undergoes after fertilisation.
- (c) How does the amount of DNA remain constant though each new generation is a combination of DNA copies of two individuals. (Delhi 2014)

Answer:

- (a) Unisexual flowers bear organs of only one sex, i.e., either stamen or pistil, e.g., papaya. Bisexual flowers contain both stamen and pistil, e.g., Hibiscus.
- (b) After fertilisation, the fertilised egg (or zygote) divides several times to form an embryo within the ovule. The ovule develops a tough coat around it and is gradually converted into a seed. The ovary of flower develops and becomes a fruit (with seeds inside it). The other parts of flower like sepals, petals, stamens, stigma and style dry up and fall off. Only the ovary is left behind. So, at the place on plant where we had a flower originally, we now have a fruit (which is the ovary of the flower containing seeds). A fruit protects the seeds.
- (c) The amount of DNA remain constant in each new generation because of formation of haploid gametes. Gametes are special type of cells called reproductive cells which contain only half the amount of DNA as compared to the normal body cells of an organism. So, when a male gamete combines with a female gamete during sexual reproduction, then the new cell 'zygote' will have the normal amount of DNA. For example, the human sperm has 23 chromosomes and the human egg (or ovum) has also 23 chromosomes. So, when a sperm and an egg fuse together during fertilisation, then the zygote formed will have $23 + 23 = 46$ chromosomes, which is the normal number of chromosomes.

**Question 132.**

- (a) Write the name of the human male reproductive organ that produces sperms and secretes a hormone. Name the hormone secreted and state its function.
- (b) Write the site of fertilisation and the part where the zygote gets implanted in the human female.
- (c) State, in brief, how an embryo gets its nourishment inside the mother's body. (Delhi 2014)

Answer:

- (a) Refer to answers 88 (a)(i) and (b).
- (b) Refer to answer 122 (a) (ii), (iii).
- (c) Refer to answer 123 (c).

Question 133.

- (a) Name the respective part of human female reproductive system :
- that produces egg
 - where fusion of egg and sperm takes place, and
 - where zygote gets implanted.
- (b) Describe in brief what happens to the zygote after it gets implanted. (Delhi 2014)

Answer:

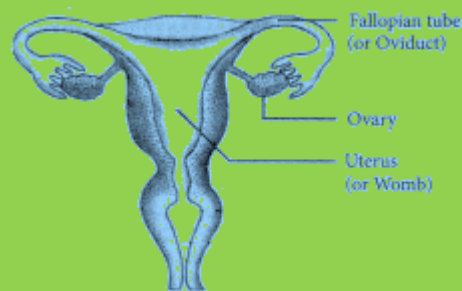
- (a) Refer to answer 122 (a).
- (b) After implantation of zygote or embryo in the thick lining of the uterus, a disc-like special tissue develops between the uterus wall and the embryo, which is called as placenta. Placenta meets all the requirements for developing the fetus like nutrition, respiration, excretion, etc. When fetus (embryo) develops completely, the rhythmic contraction of uterus muscles gradually pushes the baby out of the mother's body through vagina a baby is born.

Question 134.

- (a) Draw a sectional view of human female reproductive system and label that part where
- eggs develop
 - fertilisation take place
 - fertilised egg gets implanted
- (b) Describe, in brief, the changes that uterus undergoes
- to receive the zygote
 - if zygote is not formed. (AI 2014)

Answer:

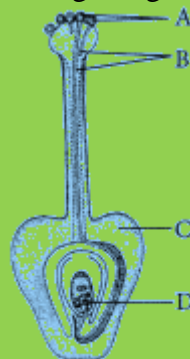
- (a) The sectional view of human female reproductive system is as follows:



- Ovary is the part where eggs develop.
 - Fallopian tube is the part where fertilisation takes place.
 - Uterus is the part where fertilised egg gets implanted.
- (b) (i) When the ovum (or egg) is fertilised in the oviduct, then a zygote is formed. The uterus prepares itself every month to receive a zygote. The inner lining of uterus becomes thick and spongy with lot of blood capillaries in it. This would be required for nourishment and further development of embryo.
- (ii) If a sperm is not available at the time of ovulation, then fertilisation of ovum does not take place. Since the ovum (or egg) is not fertilised, so the thick and soft uterus lining having lot of blood capillaries in it is not required. The unfertilised ovum dies within a day and the uterus lining also breaks down. The breakdown and removal of the inner, thick and soft lining of the uterus along with its blood vessels in the form of vaginal bleeding is called menstrual flow or menstruation.

Question 135.

- (a) Name the parts labelled as A, B, C and D in the diagram given below:



- (b) What is pollination? State its significance.
- (c) How does fertilisation occur in flowers? Name the parts of the flower that develop into (i) seed, and (ii) fruit after fertilisation. (AI 2014)

Answer:

- (a) A represents pollen grains, B represents pollen tubes, C represents ovary and D represents female germ cell.



- (b) Refer to answer 130(b).
- (c) Refer to answer 130 (c).

Question 136.

List in tabular form the two differences between asexual and sexual mode of reproduction. Name and explain with the help of labelled diagram the process by which Hydra reproduces asexually.

(Foreign 2014, Delhi 2013C)

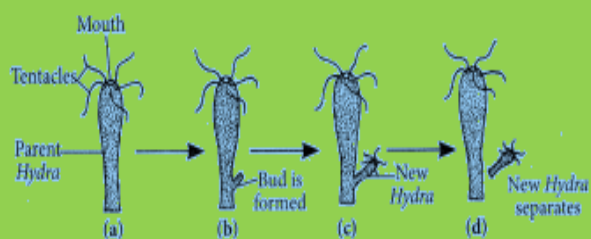
Answer:

Differences between asexual and sexual forms of reproduction are follows :

Characters	Asexual reproduction	Sexual reproduction
(i) Number of parents	The process involves only one cell or one parent, so is called uniparental reproduction.	This process involves two cells or gametes belonging to different parents, so is generally biparental.
(ii) Reproductive unit	The whole body of the parent acts as reproductive unit or it can be in a single cell or a bud.	The reproductive unit is gamete, which is unicellular and haploid.
(iii) Nature of offspring	The offsprings are genetically similar to parents.	The offsprings differ from parents.

Hydra is simple multicellular animal. It reproduces asexually by the process of budding. In Hydra first a small outgrowth called ‘bud’ is formed on the side of its body by the repeated mitotic divisions of its cells. This bud then grows gradually to form a small Hydra by developing a mouth. Finally, the tiny new Hydra detaches itself from the body of parent and lives as a separate organism. In this way, the parent Hydra produce a new Hydra.

The following figure shows Hydra reproducing by the method of budding.



Question 137.

(a) Name the human male reproductive organ that produces sperms and also secretes hormones. Write the functions of the hormone secreted.

(b) Name the parts of the human female reproductive system where (i) fertilisation and (ii) implantation occur respectively. Explain how the embryo gets nutrition inside the mother’s body.

(Foreign 2014)

Answer:

(a) Refer to answers 88 (a) (i) and (b).

(b) Refer to answers 122 (a) and 123 (c).

Question 138.

(a) List three distinguishing features between sexual and asexual types of reproduction.

(b) Explain why variations are observed in the offsprings of sexually reproducing organisms?

(Delhi 2013)

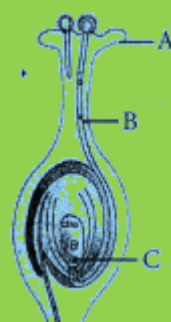
Answer:

(a) Refer to answer 136.

(b) Sexual reproduction involves fusion of male and female gametes coming from male and female parents. Variations occur due to (i) fusion of gametes which come from two different and sexually distinct individuals and (ii) meiosis which occurs during gametogenesis and create a new combination of genes. It plays a prominent role in the origin of new species and leads to variations required for evolution. Therefore, offsprings of sexually reproducing organisms show variation.

Question 139.

(a) Identify A, B and C in the given diagram , and write their functions.



(b) Mention the role of gamete and zygote in sexually reproducing organisms. (Delhi 2013)

Answer:

(a) A represents stigma. It receives the pollen grains from the anther of stamen. Stigma is sticky so that pollen can stick to it so that fertilisation can occur. B represents pollen tube. Pollen tube acts as a conduit to transport the male gamete cells from



the pollen grain at stigma to the ovules at the base of the carpel for the process of fertilisation. C represent female germ cell. Female germ cell fertilise with male germ cells to forms zygote which develops into an embryo within the ovule. Ovule converts into a seed that gives rise a new individual.

(b) Role of Gamete : Gametes are the reproductive cells involved in sexual reproduction having half of the chromosome. Gametes carry variations generated during its formation (meiosis). A male gamete and a female gamete fuses to form zygote. Role of Zygote : The fusion of male gamete with female gamete forms a zygote during sexual reproduction. Zygote has normal number of chromosomes and new combinations of variation that express in new generation. The zygote undergoes repeated mitotic divisions to form the embryo which has the potential to form a complete individual.

Question 140.

(a) Give an example of a bisexual flower.
(b) Draw a longitudinal section of a pistil showing the germination of pollen grains. Label the following parts:

- (i) Stigma
 - (ii) Male germ cell
 - (iii) Female germ cell
 - (iv) Ovary
 - (v) Style
 - (vi) Pollen tube
- (c) Mention the site and the product of fertilisation in a flower. (Delhi 2013 C)

Answer:

- (a) Hibiscus is an example of a bisexual flower.
- (b) Refer to answer 120 (b).
- (c) Refer to answer 130 (c).

Question 141.

Define the terms pollination and fertilisation. Draw a diagram of a pistil showing pollen tube growth into the ovule and label the following: pollen grain, male gamete, female gamete, ovary. (Delhi 2012)

Answer:

The process of transfer of pollen grains from the anther of a flower to the stigma of the same flower or another flower is known as pollination. Fertilisation is the fusion of male gamete with the

female gamete (or egg).
Refer to answer 120(b) for figure.

Question 142.

Describe in brief the role of (i) testes (ii) seminal vesicle, (iii) vas deferens, (iv) ureter and (v) 'prostate gland in human male reproductive system. (Delhi 2012)

Answer:

- (i) Refer to answer 88 (a) (i).
- (ii) Seminal vesicles are one pair of sac like structures near the base of bladder. Seminal fluid is a watery alkaline fluid that contains nutrients (fructose) which serve as a source of energy for the sperm. Each seminal vesicle releases its contents into the ejaculatory duct during ejaculation.
- (iii) Refer to answer 88(a) (iii).
- (iv) Ureter : From hilum of each kidney emerges out a slender, whitish tube called ureter. Ureter of each kidney leaves from the renal pelvis. Each ureter is about 30 cm long, 3 – 4 mm in diameter and opens into urinary bladder by slit-like aperture. The ureters carry urine from kidneys to urinary bladder.
- (v) Refer to answer 88(a) (iv).

Question 143.

Distinguish between unisexual and bisexual flowers giving one example of each. Draw a diagram showing process of germination of pollen grains on stigma and label the following parts :

- (i) Female germ cell
- (ii) Male germ cell
- (iii) Ovary (AI 2012)

Answer:

The flowers which contain only one sex organ, either stamens or carpels are called unisexual flowers. E.g., flowers of papaya and watermelon whereas the flowers which contain both the sex organs, stamens as well as carpel, are called bisexual flowers, e.g., flowers of Hibiscus and mustard.
Refer to answer 120(b) for figure.

Question 144.

Draw a diagram of human female reproductive system and label the part
(i) that produces eggs
(ii) where fusion of egg and sperm takes place
(iii) where zygote is implanted.



What happens to human egg when it is not fertilised? (AI 2012)

Answer:

Refer to answer 134 (a) and b (ii).

Question 145.

(a) Explain with the help of a diagram how pollen after landing on the stigma of a flower helps male germ cell to reach the female germ cell. Label the following : ovary, female germ cell, male germ cell and pollen grain.

(b) State the meaning of pollination and mention a distinguishing feature between self-pollination and cross-pollination.

(Foreign 2012)

Answer:

(a) After landing of stigma, the pollen grain does not pass down the stigma. Only its pollen tube does so. The pollen tube eats its way through the solid part of the stigma and style by secreting pectinases and hydrolytic enzymes. It travels intercellularly and chemotropically along the concentration gradient of calcium – boron – inositol sugar complex.

The contents of the pollen grains shift into pollen tube with the tube or vegetative nucleus moving to its tip followed by the two gametes. Further growth of the pollen tube occurs only towards its tip.

In this way, pollen tube helps the male germ cell to reach the female germ cell.

Refer to answer 120 (b) for figure.

(b) Refer to answer 73.

Question 146.

State in brief the changes that take place in a fertilised egg(zygote) till birth of the child in the human female reproductive system. What happens to the egg when it is not fertilised? (Foreign 2012)

Answer:

When the ovum (or egg) is fertilised in the oviduct, then a zygote is formed. The zygote divides rapidly by mitosis as it moves down slowly in the oviduct and forms a ball of cells. This hollow ball of cells, called an embryo sinks into the soft and thick lining of the uterus and gets embedded in it. The embedding of embryo in the thick lining of the uterus is called implantation. After implantation, a disc-like special tissue develops between the uterus wall (called uterine wall) and the embryo (or fetus), which is called

placenta. The fetus is connected to placenta in mothers body through umbilical cord. It is through the placenta that all the requirements of the developing fetus like nutrition, respiration and excretion, etc., are met from the mothers body.

The time period from the fertilisation upto the birth of the baby is called gestation. The average gestation period in humans (or the average during of human pregnancy) is about nine months. During the gestation period, the fetus grows to become a baby. Birth begins when the strong muscles in the walls of the uterus start to contract rhythmically. The rhythmic contraction of uterus muscles gradually pushes the baby out of the mother’s body through vagina and a baby is born. If, a sperm is not available at the time of ovulation, then fertilisation of ovum (or egg) does not take place. Since the ovum (or egg) is not fertilised, so the thick and soft uterus lining having lot of blood capillaries in it is not required. The unfertilised ovum dies within a day and the uterus lining also breaks down. The breakdown and removal of the inner, thick and soft lining of the uterus alongwith its blood vessels is called menstrual flow or menstruation.

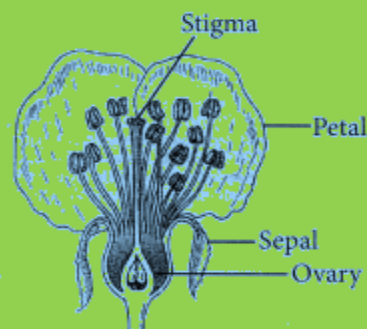
Question 147.

(a) Draw a diagram of the longitudinal section of a flower and label on it sepal, petal, ovary and stigma.

(b) Write the names of male and female reproductive parts of a flower. (Delhi 2011)

Answer:

(a) The longitudinal section of a flower is as follows :



(b) Refer to answer 87.

Question 148.

(a) Draw a diagram illustrating fertilisation in a flowering plant and label on it: male germ cell, ovary, female germ cell and pollen grain.

(b) Distinguish between self pollination and cross pollination. (Foreign 2011).

Answer:

(a) Refer to answer 120 (b). (b) Refer to answer 73.

